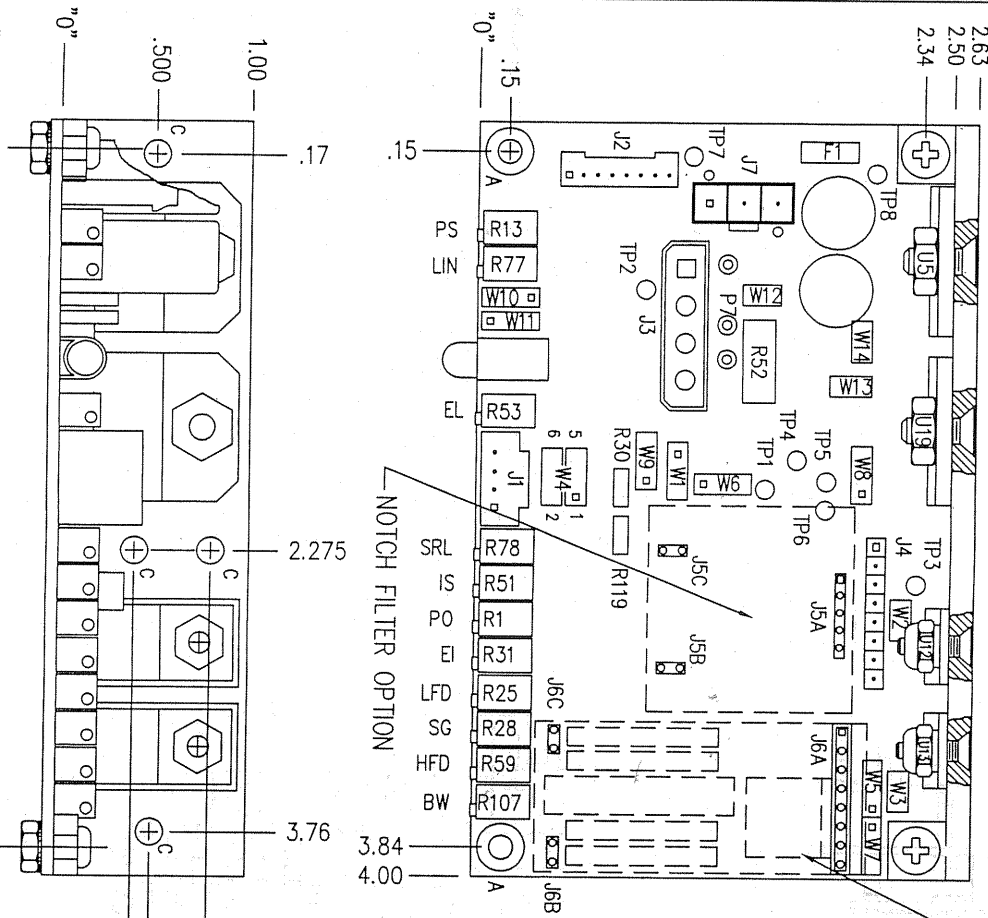


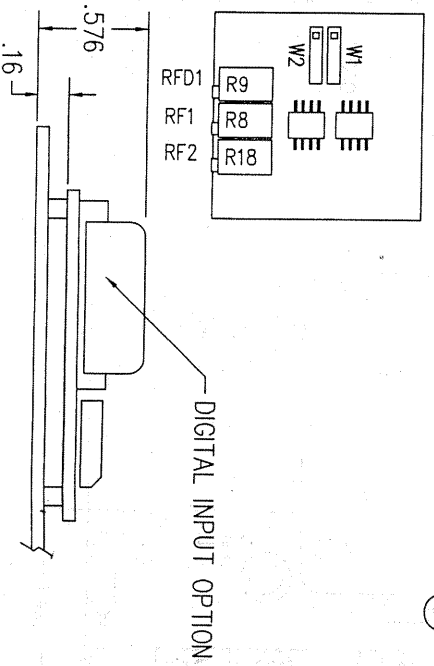
These drawings and specifications are the property of
 CUMMINS TECHNOLOGY and shall not be reproduced,
 or used in any way, without the written permission of
 CUMMINS TECHNOLOGY, INC.

REV	DESCRIPTION	CHK	DATE
0	17 3/16" LUGS AND NEW 80 ADDD TO	PM	5/22
1	ADD 17 3/16" LUGS TO SHEET 3	PM	5/22
2	ADD 17 3/16" LUGS TO SHEET 3	PM	5/22
3	ADD 17 3/16" LUGS TO SHEET 3	PM	5/22
4	ADD 17 3/16" LUGS TO SHEET 3	PM	5/22
5	ADD 17 3/16" LUGS TO SHEET 3	PM	5/22
6	ADD 17 3/16" LUGS TO SHEET 3	PM	5/22
7	ADD 17 3/16" LUGS TO SHEET 3	PM	5/22
8	ADD 17 3/16" LUGS TO SHEET 3	PM	5/22
9	ADD 17 3/16" LUGS TO SHEET 3	PM	5/22

DIGITAL INPUT OPTION
 (67556)



NOTCH FILTER OPTION



DIGITAL INPUT OPTION

HOLE QTY	SIZE
A 2	Ø.125 THRU
B 2	Ø.145 THRU 82°C SINK TO Ø.500 (FAR SIDE)
C 4	Ø.145 THRU
D 2	Ø.125 THRU 82°C SINK TO Ø.250 (FAR SIDE)

NOTES:
 1. FOR ALL CONNECTORS, SQUARE PAD DENOTES PIN "1".

REVISION	DATE	BY	CHK
C	7/28	PM	PM

SCALE 2x SHEET 1 OF 4

671 SERVO DRIVER
 OUTLINE DWG

CUMMINS TECHNOLOGY, INC.
 109 SOUTH PARKWAY - USA
 CUMMINS, VA 02026

UNLESS OTHERWISE SPECIFIED:
 TOLERANCES
 .XX = ±.0010
 .XXX = ±.0005
 ANGLES ±.05° MIN
 SURFACE FINISHES
 BREAK ALL SHARP EDGES
 MATERIAL